

DIANE ROSENSTEIN

Sarah Awad: Gate Paintings

September 12 – October 10, 2015



1. *Pied-à-terre*
2015
Oil and Cel-Vinyl on canvas
72 x 84 inches
SAW253



2. *Prune and Graft*
2015
Oil and Cel-Vinyl on canvas
66 x 60 inches
SAW251



3. *Stile's End*
2015
Oil on canvas
18 x 14 inches
SAW271



4. *Blue Hour*
2015
Oil and Cel-Vinyl on canvas
72 x 54 inches
SAW279

DIANE ROSENSTEIN



5. *Studio Door*
2015
Oil and Cel-Vinyl on canvas
84 ½ x 40 ½ inches
SAW250



6. *Garden Terminal*
2015
Oil and Cel-Vinyl on canvas
48 x 42 inches
SAW258



7. *Desert Comfort*
2015
Oil and Cel-Vinyl on canvas
72 x 90 inches
SAW249



8. *Blackheath*
2015
Oil and Cel-Vinyl on canvas
54 x 48 inches
SAW255

DIANE ROSENSTEIN



9. *Consideration (1)*
2015
Oil, Cel-Vinyl, ink and pastel on paper
18 x 15 inches
SAW287



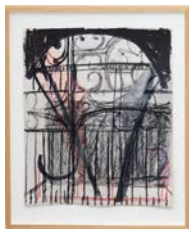
10. *Consideration (5)*
2015
Oil and ink on paper
18 x 15 inches
SAW285



11. *Consideration (6)*
2015
Cel-Vinyl, gouache and pastel on paper
18 x 15 inches
SAW282



12. *Consideration (2)*
2015
Ink on paper
18 x 15 inches
SAW288



13. *Consideration (3)*
2015
Ink, pastel, charcoal, colored pencil and graphite on paper
18 x 15 inches
SAW286



14. *Consideration (4)*
2015
Cel-Vinyl on paper
18 x 15 inches
SAW284

DIANE ROSENSTEIN



15. *Bloom*
2015
Oil and Cel-Vinyl on canvas
60 x 66 inches
SAW252



16. *Blöndu*
2015
Oil on canvas
22 x 24 inches
SAW268



17. *Unter den Linden*
2015
Oil and Cel-Vinyl on canvas
72 x 90 inches
SAW247



18. *Studio @ 9*
2015
Oil and Cel-Vinyl on canvas
38 x 50 inches
SAW280